



# VILLA SAGE

PANORAMIC TIGULLIO







## VILLA SAGE

PANORAMIC TIGULLIO

Energy Class A

5000 mq of green area with swimming pool

6 apartments with terraces and/or garden

Sizes from 170 to 318 mq

8 box

Predisposition for electric charging

10 parking spaces

Motorcycle parking spaces

Delivery on Summer 2025









# MASTERPLAN



This plan is not to scale and does not constitute contractual documentation, and all movable or fixed furnishings are purely indicative of the spaces. Energy class A.  
The Works Management has the right to make additions and variations, necessary for technical, architectural, plant and structural purposes, during the design or execution phase.



## Garden floor - Apartment 1



# GROUND FLOOR - apartments 2 and 3



- Appartamento 2
- Appartamento 3

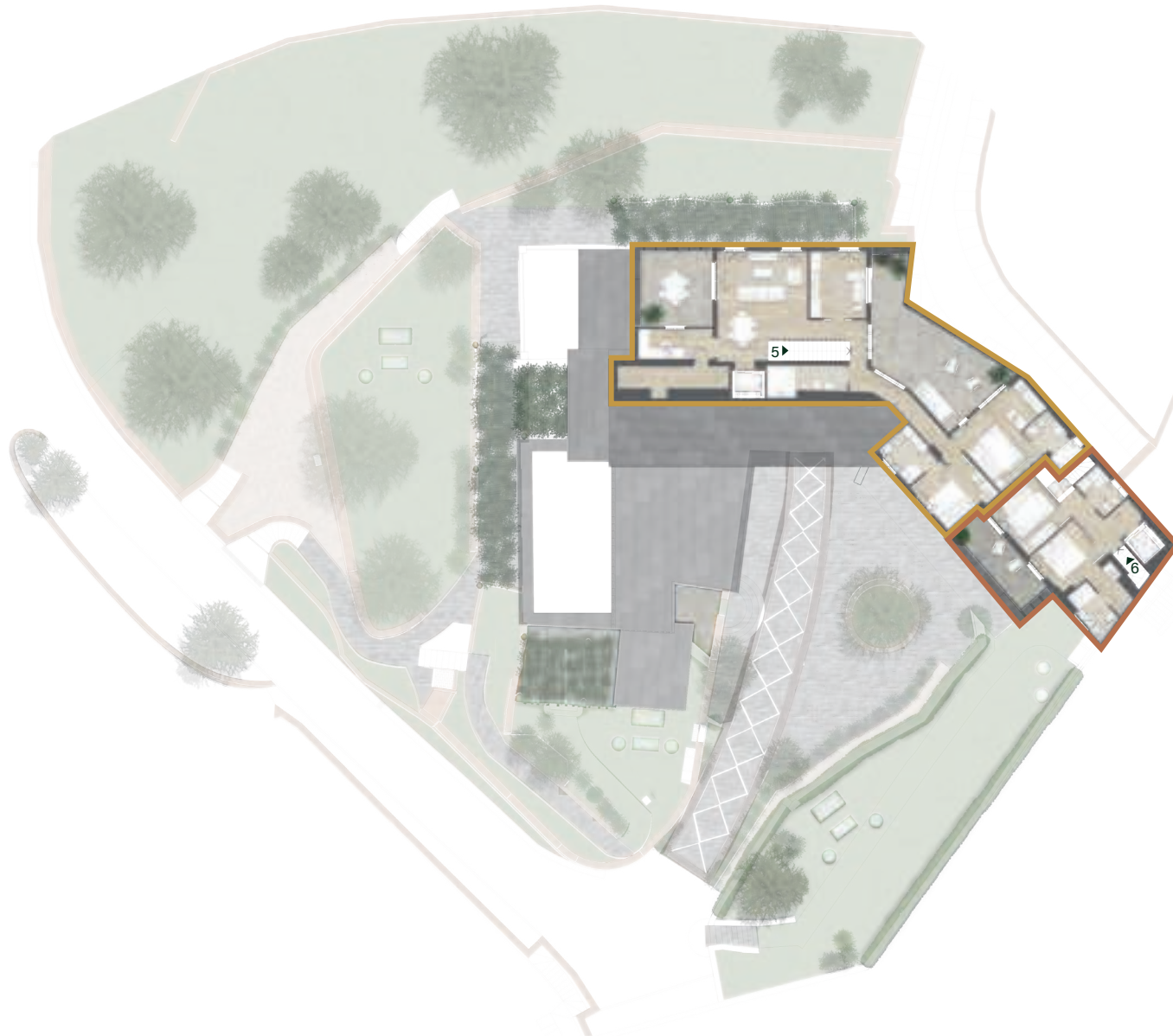


This plan is not to scale and does not constitute contractual documentation, and all movable or fixed furnishings are purely indicative of the spaces. Energy class A.  
The Works Management has the right to make additions and variations, necessary for technical, architectural, plant and structural purposes, during the design or execution phase.

# First floor - apartments 4 and 6



## Second floor - apartments 5 and 6

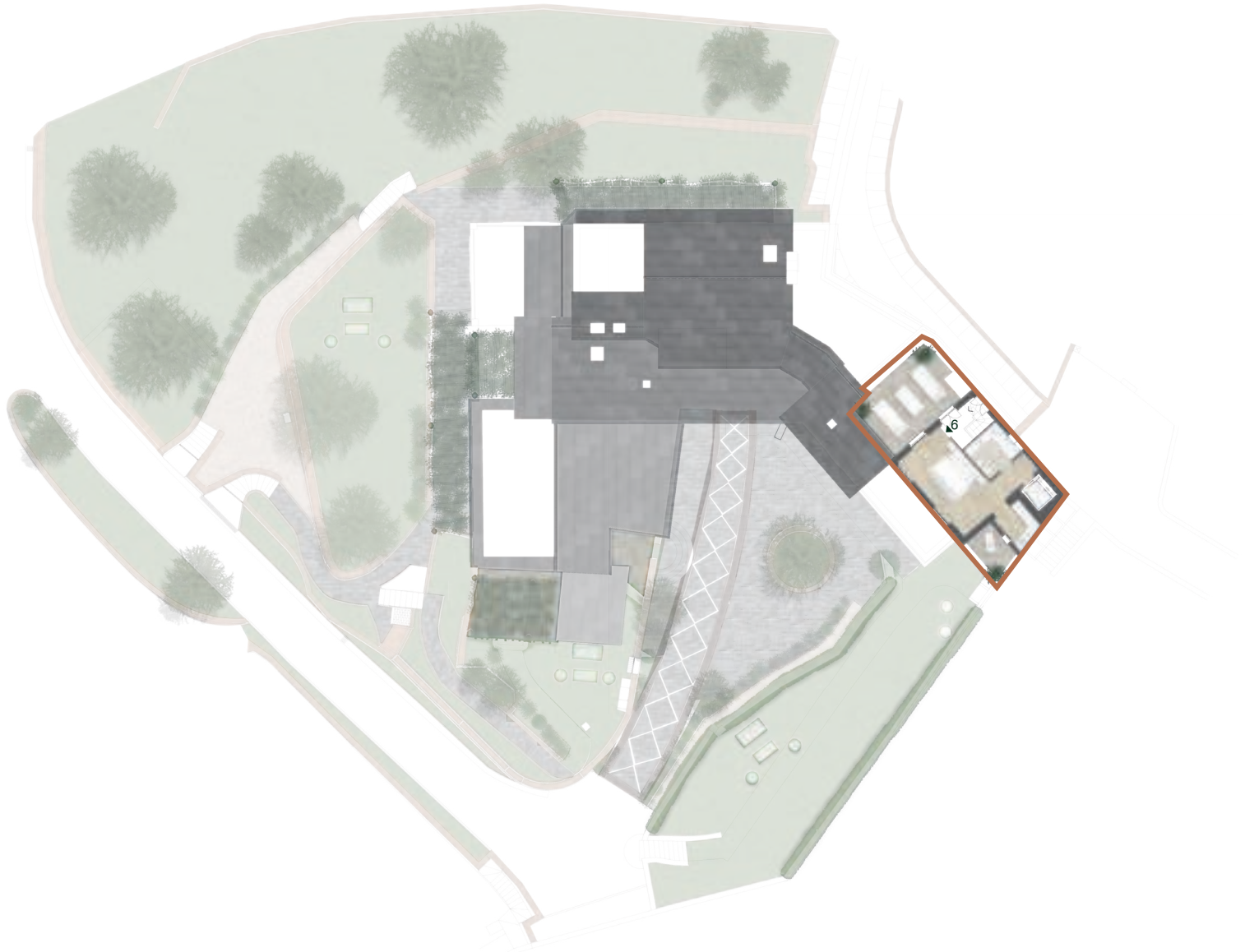


- Appartamento 5
- Appartamento 6



This plan is not to scale and does not constitute contractual documentation, and all movable or fixed furnishings are purely indicative of the spaces. Energy class A.  
The Works Management has the right to make additions and variations, necessary for technical, architectural, plant and structural purposes, during the design or execution phase.

# Third floor - Apartment 6



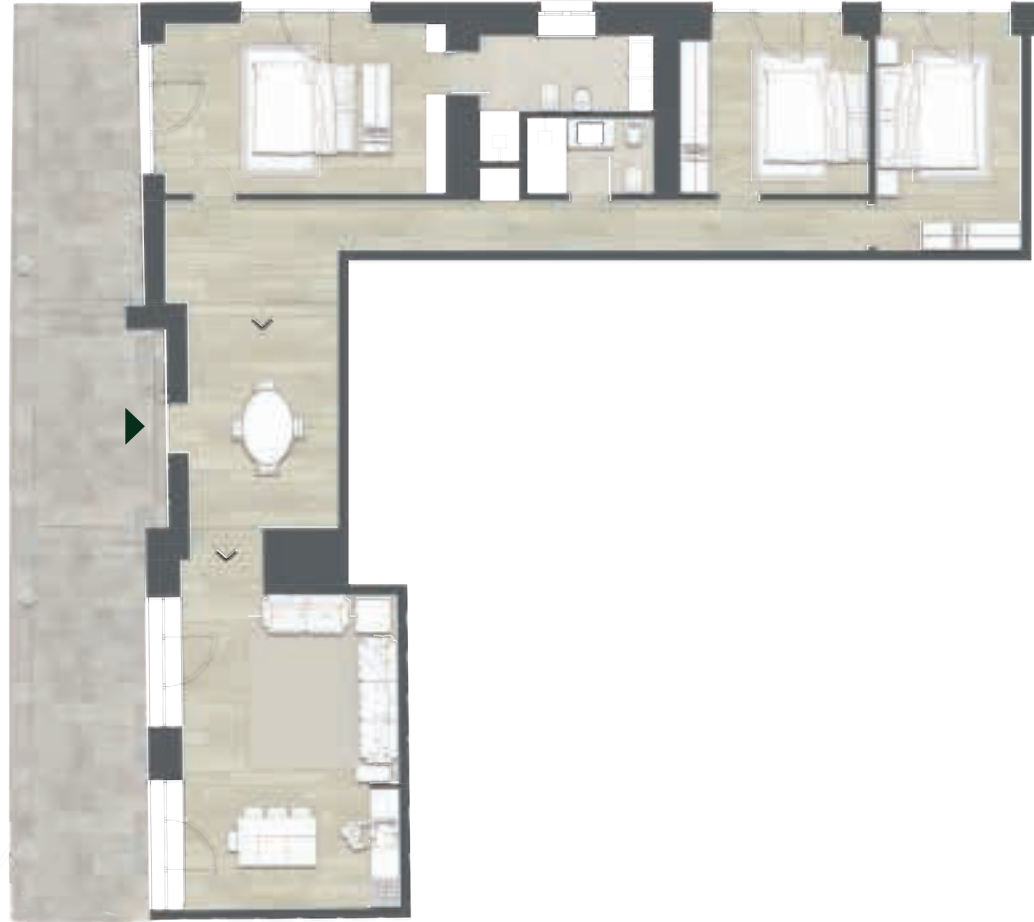
This plan is not to scale and does not constitute contractual documentation, and all movable or fixed furnishings are purely indicative of the spaces. Energy class A.  
The Works Management has the right to make additions and variations, necessary for technical, architectural, plant and structural purposes, during the design or execution phase.



# Apartment 1 - Garden floor - detail



App. 1  
independent  
entrance



Garden floor



184 mq



3



2



Garden  
900 mq



Sea view



Motorcycle  
parking space



Garage and parking  
space available  
separately



SOLD



Molteni & C

# Apartment 1 Garden



# Apartment 1

## Swimming Pool



# Apartment 1

## Garden floor - Living & Dining



# Apartment 1

## Garden floor - Entrance

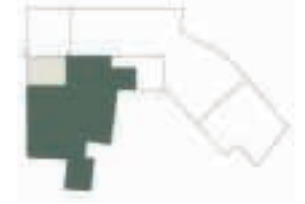


# Apartment 1

## Garden floor - Master Bedroom



# Apartment 2 - ground floor - detail



App. 2  
independent  
entrance



Garden floor



202 mq



3



2



Garden  
and terrace



Sea view



Motorcycle  
parking space



Garage and parking  
space available  
separately



SOLD



Molteni & C

Apartment 2  
ground floor - Garden



# Apartment 2 ground floor - Living



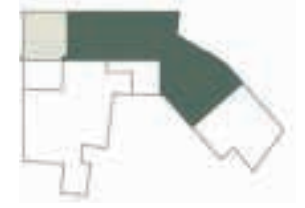
Apartment 2  
ground floor - Bathroom



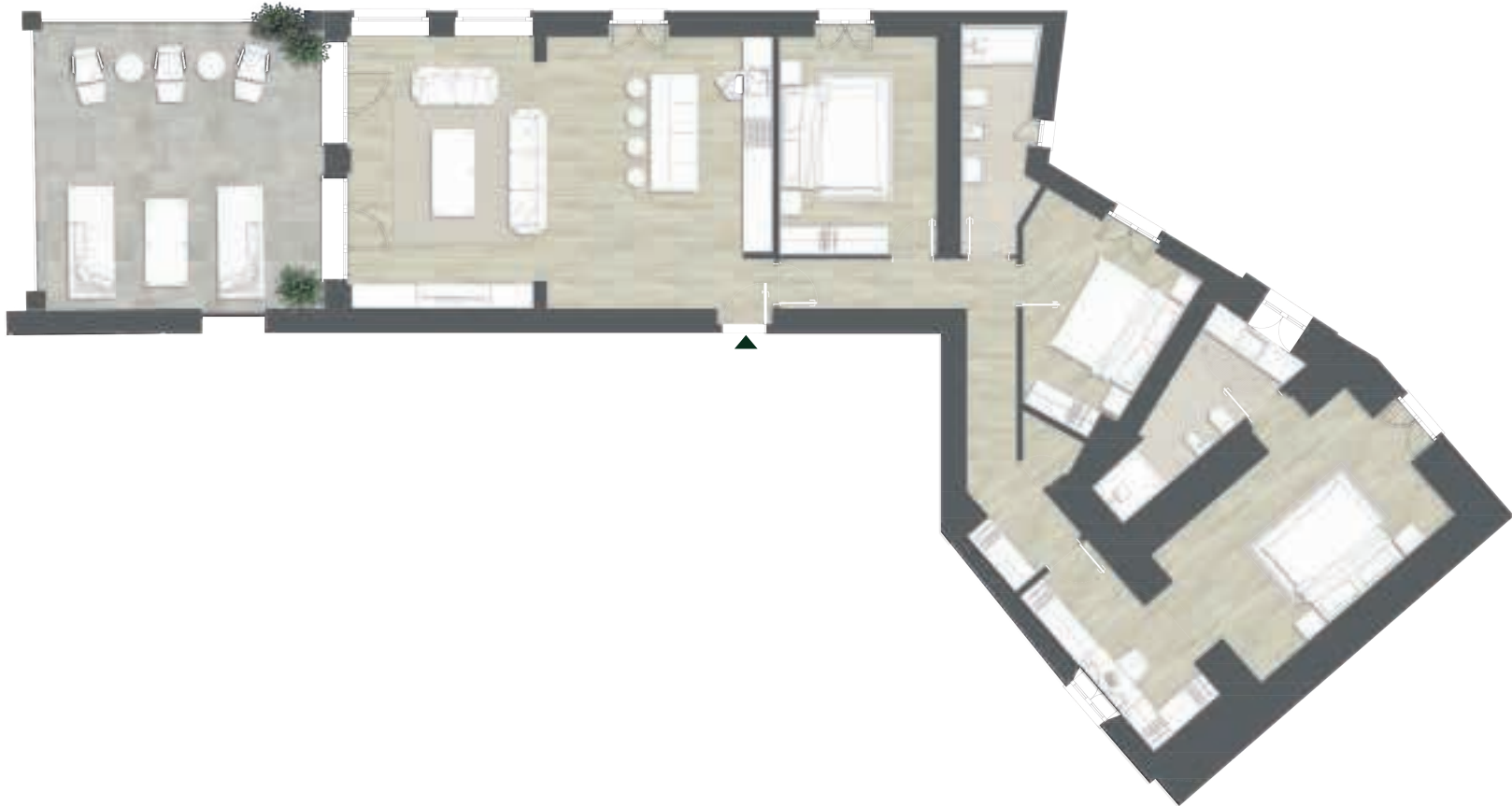
## Apartment 2 ground floor - Bedroom Terrace



# Apartment 3 - ground floor - detail



App. 3



Garden floor



204 mq



3



2



1



Sea view



Motorcycle parking space



Garage and parking space available separately



1.930.000



Molteni&C

# Apartment 3

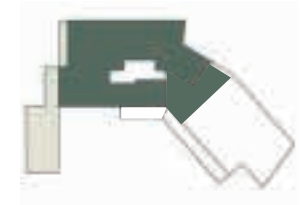
## ground floor - Living & Dining



Apartment 3  
ground floor - Cucina



# Apartment 4 - first floor - detail



App. 4



First floor



219



4



4



2



Sea view



Motorcycle parking space



Garage and parking space available separately



Elevator

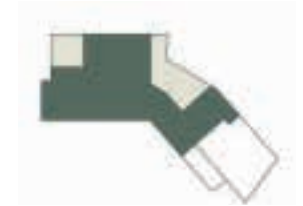


SOLD



Molteni & C

# Apartment 5 - Second floor - detail



App. 5



Second floor



170 mq



3



3



2



Sea view



Motorcycle parking space



Garage and parking space available separately



Elevator



SOLD



Molteni & C

# Apartment 5

## Second floor - Living



# Apartment 5

## Second floor - Master Bedroom



# Apartment 5

## Second floor - Bedroom Terrace



# Apartment 6 - First, second, third floor - detail



**First floor**  
Apartment 6



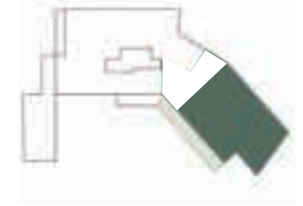
**Second floor**  
Apartment 6



**Third floor**  
Apartment 6



# Apartment 6 - First floor - detail



App. 6



First floor  
Second floor  
Third floor



292



3



4



Garden and 4  
terraces



Sea view



Motorcycle  
parking space



Garage and parking  
space available  
separately



Independent  
elevator

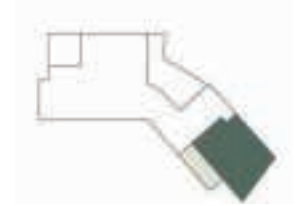


2.200.000



Molteni & C

# Apartment 6 - Second floor - detail



App. 6



First floor  
Second floor  
Third floor



292



3



4



Garden and 4  
terraces



Sea view



Motorcycle  
parking space



Garage and parking  
space available  
separately



Independent  
elevator



2.200.000



Molteni & C

# Apartment 6 - Third floor - detail



App. 6



First floor  
Second floor  
Third floor



292



3



4



Garden and 4  
terraces



Sea view



Motorcycle  
parking space



Garage and parking  
space available  
separately



Independent  
elevator



2.200.000



Molteni & C

Apartment 6  
First floor - Garden



# Apartment 6

## First floor - Living



Apartment 6  
First floor - Living



# Apartment 6

## First floor - Relaxing Area



# Apartment 6

## First floor - Dining & Kitchen



# Apartment 6

## Third floor - Master Bedroom





# VILLA SAGE

PANORAMIC TIGULLIO

Porto Rapallo: 2 km

Beaches : 600 mt

Rapallo Seafront: 1 km

Park Casale: 400 mt

Golf And Tennis Rapallo: 2,9 km

Bus Stop: 300 mt





# VILLA SAGE

PANORAMIC TIGULLIO



DEVELOPER

